



2008GS APPLICATIONS GUIDE

INTRODUCTION

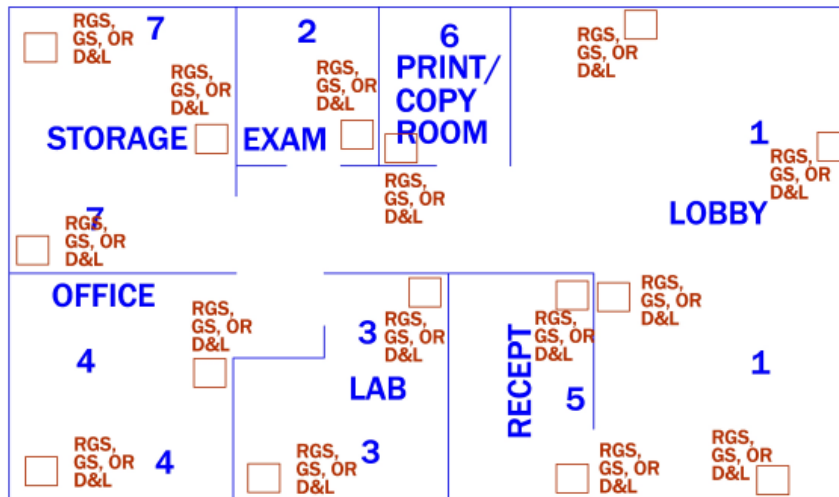
The Genesis Air 2008GS is a stand-alone unit used to reduce the levels of Volatile Organic Compounds (VOC's) and viable airborne biological contaminants. The unit may be suspended from the ceiling for permanent installations or utilized as a roll-around "point-of-use" air purifier, such as in a morgue or medical examiner's office. The 2008GS uses four 14"x 20"x 2" catalyst panels. It is suitable for spaces up to 8300 ft³. For recommended unit configurations, consult the 2008 GAP Product Calculator supplied with packet. Contact Genesis Air if you do not have one. All Genesis Air products incorporate 3-step GAP technology: MERV Filtration, UVGI Lamps and Photocatalysis.



EXAMPLES OF USE

The 2008GS is suited for medium to large spaces, such as warehouses, casino floors, bars, morgues, medical examiner's offices and hangars. Roll-around units are versatile, and can be used for spot remediation during construction, painting, plumbing, open-wall remodeling. Depending on what source of VOC's are present, the unit may be hung to reduce the lighter-than-air contaminants (tobacco smoke VOC) or placed on the floor for heavier organic loads (food-processing, printer's ink). The main goal is to place the unit between the level of people in the room and the source of VOC's and/or airborne biological contaminants and to maintain low levels of contaminants by multiple air changes.

INSTALLATION EXAMPLE



LOCATION OF STAND-ALONE UNITS EXAMPLE

Rationale:

1. Reduce the threat from airborne contaminants at common entry point, such as mold, bacteria, viruses, and odors.
2. Reduce the possibility of potentially immuno-compromised people from airborne risks.
3. Reduce noxious odors and vapors from entering into the returns of the air handler.
4. To provide a safer environment for staff and personnel.
5. The receptionist area is the staff's first point-of-contact with potential bio-hazards.
6. Local VOC source.
7. If this is a dock with forklifts, these are large sources of VOC's and other contaminants that can be re-circulated into the air handlers.

Of course, use good judgment. Find out what is in each room, and what must be removed. The use of any stand-alone system, such as a 2008GS, will reduce the overall load of contaminants entering the air handlers.

DIMENSIONAL DATA

The Genesis Air 2008GS is 24" wide, 24" deep and 26" tall. With standard casters mounted, the unit is 28" tall. Without casters, the unit is 26" tall. The 2008GS weighs 88 lbs.

LAMPS

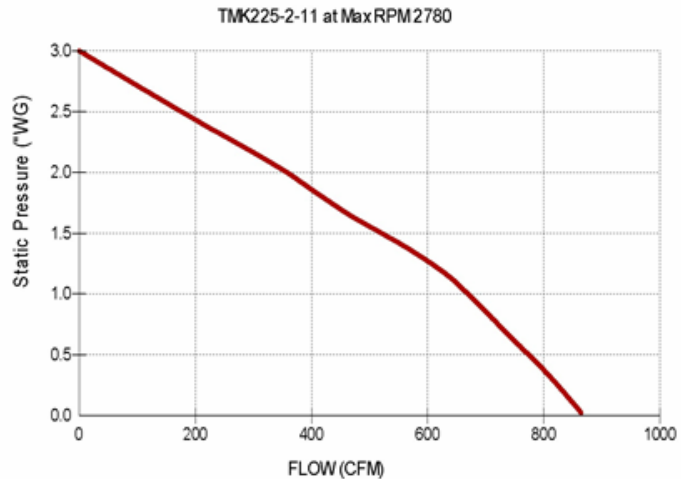
Genesis Air lamps do not produce ozone! The lamps provide a minimum intensity of 775 microwatts/cm² (5 milliwatts per square inch) at 10.77 centimeters (4.24") to activate the catalyst effectively. To maintain tested performance, lamps may not be substituted with another manufacturer's products. These lamps provide UV-C wavelengths @ 254 nm. All lamps must be replaced yearly (9000 hrs) to maintain intensity requirements. The lamp operating

temperature range is 41°F to 113°F. Genesis Air lamps contain trace amounts of mercury, encapsulated within the lamp and therefore reducing risk to the consumer or ecosphere.

FAN DATA

The Genesis Air 2008GS incorporates a single CFM TMK225 fan. The fan is rated at 830 cfm with no load. This fan is available in 115V and 230V single phase 50/60Hz; for other voltages contact Genesis Air. For 115V, the fan's amp draw is 3.0A, and rotates at 2780 RPM. The fan's speed is controlled by potentiometer. This will also serve to power the unit (including lamps) on and off.

Model No.	TMK225-2-11 (115V)
Max. Airflow	830 CFM @ 0" SP
Motor	410 watts
Max. Speed	2780 RPM
Voltage	115 volt
Phase	1
Cycle	50/60 HZ
Amperage	3.6 amps
Max. Temp.	40 C
Capacitor	20 x 400V
Weight	9 lbs.



FILTRATION

The Genesis Air 2008GS series is equipped with four 14\"x 20\"x 4\" MERV 13 filters. The inlet grilles must be placed near the source of contaminants to be effective, i.e. in the smoke layer in a casino.

POWER

Ballasts are matched to the specific length of lamp. To maintain tested performance, ballasts may not be substituted with another manufacturer's products. The ballasts must be specified either 120v or 240v, 60 Hz.: contact the factory for other voltage/frequency requirements. The ballast operating temperature range is -20°F to 158°F. The 2008GS draws 6.6A at 120V.

SAFETY

Genesis Air includes a safety kill switch on all units. The switch breaks power to the lamps and fan. The 2008GS series also includes a wire mesh guard at the inlet of the fan to prevent injury.

GENESIS AIR QUICK REFERENCE

	2008DT-FP	2008DT	2008B	2008LB	2006D&L	2008GS	2008RGS	2008 PCP STANDARD	2008 PCP DROP-IN	2008CU
Small spaces	X	X			X		X	X	X	X
Medium spaces	X	X		X		X	X	X	X	X
Large spaces			X	X		X		X	X	
Fan-powered	X		X		X	X	X			
Multiple panels standard					X	X				
Multiple panels optional			X	X				X	X	

Located in:

AHU/RTU								X	X	
Returns		X		X				X	X	X
Supplies		X		X				X	X	X
Trunk lines				X				X	X	
Stand-alone units	X		X		X	X	X			

CONTACT INFORMATION

**Genesis Air, Inc.
5202 CR 7350, Suite D
Lubbock, TX 79424**

**806.745.7000 Phone
806.745.9200 Fax**

www.genesisair.com