



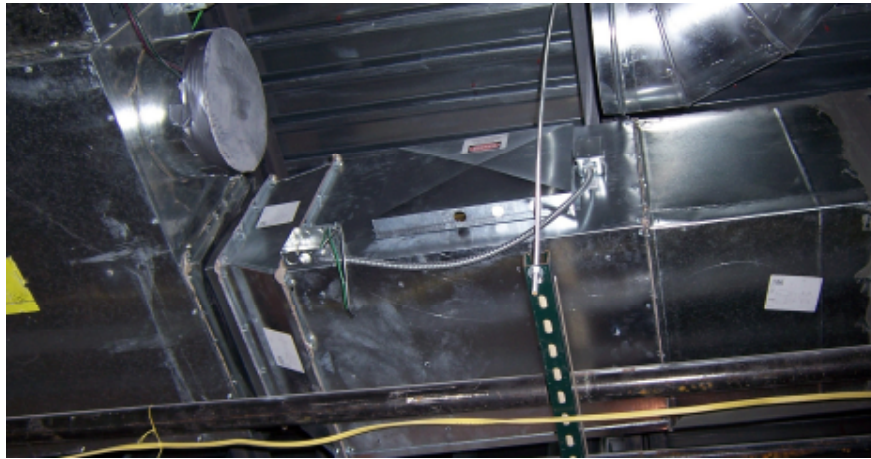
CREATING CLEAN AIR TO BREATHE



2008LB APPLICATIONS GUIDE

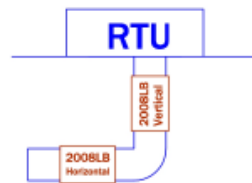
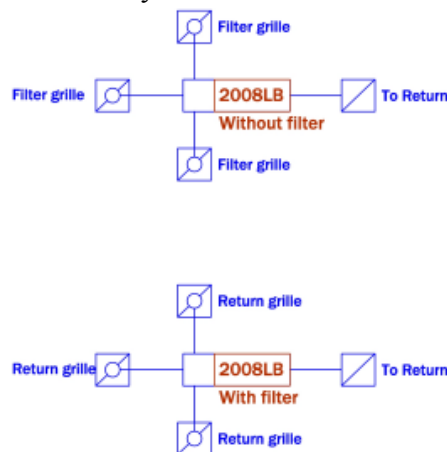
INTRODUCTION

The Genesis Air 2008LB is a Ducted-in unit used to reduce the levels of Volatile Organic Compounds (VOC's) and viable airborne biological contaminants. The unit is utilized in the returns or supplies of an Air Handling System (AHU) branch line. It may be installed in the returns of a specific area or treat returns of several rooms before reaching the AHU. The picture below shows a 2002LB before a VAV box. The 2008LB uses one to four Genesis Air PCP Drop-In panels. For example, a 2008LB3 would have three panels installed. It is suitable for spaces up to 7000 ft³. For recommended unit configurations, consult the 2008 GAP Product Calculator supplied with packet. Contact Genesis Air if you do not have one. **Note:** The number of panels will vary by task. Consult the product calculator for number of panels. All Genesis Air products incorporate 3-step GAP technology: MERV Filtration, UVGI Lamps and Photocatalysis.



INSTALLATION EXAMPLES

The following are a few ways to install a 2008LB.



Note: Multiple return ducts to a single box reduces cost. Also, the use of 2008LB may be the best way to do RTU systems.

DIMENSIONAL DATA

The Genesis Air 2008LB series is 21" wide, 31" long and 24" tall. The 2008LB1 weighs 46 lbs, and each additional panel weighs 7³/₄ lbs. **This unit may be built to specific requirements; contact Genesis Air for custom units.**

PCP DROP-IN DATA

Each Genesis Air PCP Drop-In used in the 2008LB series has nominal dimensions of 20" x 24"; actual dimensions are 1/2" less than nominal. All PCP Drop-In units are 6" deep nominal; actual dimension is 5 13/16". The catalyst is pleated at one pleat per inch. Three lamps are spaced 6" from each other, then centered over the width of the panel. The ballast tray is incorporated into the unit. The ballast tray incorporates 3 1/4" of overall length.

LAMPS

Genesis Air lamps do not produce ozone! The lamps provide a minimum intensity of 775 microwatts/cm² (5 milliwatts per square inch) at 10.77 centimeters (4.24") to activate the catalyst effectively. To maintain tested performance, lamps may not be substituted with another manufacturer's products. These lamps provide UV-C wavelengths @ 254 nm. All lamps must be replaced yearly (9000 hrs) to maintain intensity requirements. Genesis Air lamps contain trace amounts of mercury, encapsulated within the lamp and therefore reducing risk to the consumer or ecosphere.

FILTRATION

The Genesis Air 2008LB series is equipped with one 20"x 24"x 4" MERV 13 filter. This filter may be removed for ease of maintenance if there is adequate (MERV 13 or better) filtration elsewhere in the system.

POWER

Ballasts are matched to the specific length of lamp. To maintain tested performance, ballasts may not be substituted with another manufacturer's products. The ballasts must be specified either 120v or 240v, 60 Hz.: contact the factory for other voltage/frequency requirements. The ballast operating temperature range is -20°F to 158°F. The 2008LB1 draws 0.75A at 120V, and 0.75A for each additional panel.

SAFETY

Genesis Air includes a safety kill switch on all units. The switch breaks power to the lamps.

GENESIS AIR QUICK REFERENCE

	2008DT-FP	2008DT	2008B	2008LB	2006D&L	2008GS	2008RGS	2008 PCP STANDARD	2008 PCP DROP-IN	2008CU
Small spaces	X	X			X		X	X	X	X
Medium spaces	X	X		X		X	X	X	X	X
Large spaces			X	X		X		X	X	
Fan-powered	X		X		X	X	X			
Multiple panels standard					X	X				
Multiple panels optional			X	X				X	X	

Located in:

AHU/RTU								X	X	
Returns		X		X				X	X	X
Supplies		X		X				X	X	X
Trunk lines				X				X	X	
Stand-alone units	X		X		X	X	X			

CONTACT INFORMATION

**Genesis Air, Inc.
5202 CR 7350, Suite D
Lubbock, TX 79424**

**806.745.7000 Phone
806.745.9200 Fax**

www.genesisair.com